

## ZS Comp™

for composition shingle roofs

**ZS Comp™ from Zep Solar offers the fastest and least expensive way to mount PV arrays on composition shingle roofs.** With a series of drop-in and quarter-turn connections, ZS Comp offers real labor savings compared to conventional mounting systems. The structural connections of ZS Comp are auto-grounding, eliminating the need for separate grounding hardware. And with its hyper-bonded grounding matrix, ZS Comp offers the safest, most reliable way to ground PV arrays.

### Key System Benefits

Dramatically reduces installation time

Eliminates mounting rails and clip hardware

Eliminates separate grounding hardware

Ultra-reliable hyper-bonded grounding matrix

Rapid, top-accessible precision array leveling

Ultra-low parts count

Enhanced aesthetics

### Key Technical Features

TÜV tested to IEC 61215 for 5400Pa load conditions

Suitable for high wind applications

Interlock ETL listed to UL 1703 as ground bond means

Ground Zep UL and ETL listed to UL 467 as grounding and bonding device

Interlock, Leveling Foot and Ground Zep listed to UL 2703 as PV bonding device

### Zep Compatible™

ZS Comp mounting hardware is designed for use with Zep Compatible PV modules from leading PV module manufacturers.

Visit [zepsolar.com](https://zepsolar.com) for a current list of Zep Compatible PV modules.

### Our Other Product Families

 **ZS Aero™**  
for low-slope & flat roofs

 **ZS Seam™**  
for standing seam metal roofs

 **ZS Span™**  
for rail-based applications

 **ZS Tile™**  
for tile roofs

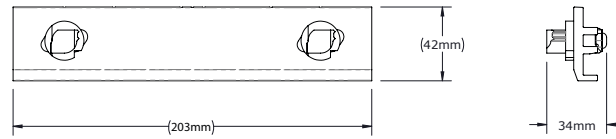
 **ZS Trap™**  
for trapezoidal metal roofs

 **ZS Wave™**  
for corrugated roofs



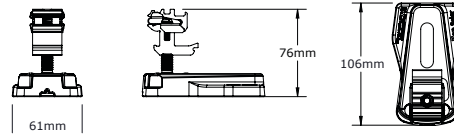
## Components

### Interlock



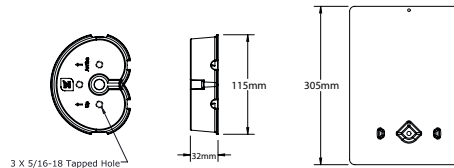
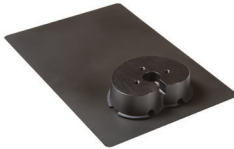
The Interlock provides north-south and east-west structural and ground bond connections creating a structurally contiguous hyper-bonded array. Interlock UL listed to UL 2703 and ETL listed to UL 1703.

### Leveling Foot



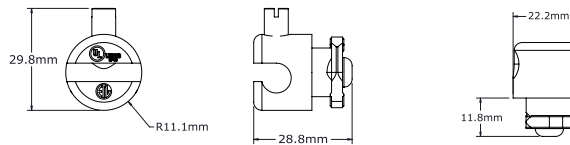
The Leveling Foot provides a means of attachment between the PV array and the mounting surface or flashed attachment apparatus and allows for easy array height adjustment (1.25" throw). UL listed to UL 2703.

### Comp Mount Type C



The Comp Mount Type C provides a means of flashed attachment for composition shingle roofs. Mounting Block UL listed to UL 2703. Water proofing capability verified per UL 441 Section 27(Rain Test).

### Ground Zep



The Ground Zep provides a point of connection between the PV array and the equipment grounding conductor. One Ground Zep is required for every 72 PV modules. UL and ETL listed to UL 467. UL listed to UL 2703.

### Universal Box Bracket



The Universal Box Bracket allows rapid attachment of electrical boxes to the module frame.

### DC Wire Clip



Clips into Zep Groove for ultra-fast and easy management of DC PV wiring.

### Grip



The Grip secures the Array Skirt to the first row of Leveling Feet or Cam Feet. UL listed to UL 2703.

### Array Skirt



The Array Skirt facilitates easy front-row installation while providing a clean look at the front of the PV array. UL listed to UL 2703.

### End Cap



The End Cap provides an aesthetic cover for the exposed end of the Array Skirt. Made of anodized aluminum. UL listed to UL 2703.

### Tools



Zep Tool: 4 functions, 1 tool.  
Flat Tool: For inter-module removal.