

高级模式 Advanced mode

1, 功能概论: , 支持高级功能固件版本是 R5KL1 系列 ARM 1.00.49,DSP 1.01.43, R8KLNA 系列 ARM 1.03.21,DSP 1.04.13 以后的版本 (包含此版本), 选择此模式, 原来的工作模式不工作 (自发自用, 电池优先);

Overview of function: Supports advanced functions. If the firmware version is R5KL1 ARM 1.00.49,DSP1.01.43, R8KLNAARM 1.03.21,DSP 1.04.13or later (including this version), select this mode. The original working mode does not work (Self-Comsume, Bat Priority).

1.1 工作模式:

1.1.1、禁止;

1.1.2、卖电优先;

1.1.3、自消耗卖电; (自发自用防逆流关)

1.1.4、自消耗防逆流开; (自发自用防逆流开)

1.1 Working mode:

1.1.1. Disable--This function is not enabled

1.1.2. Sell Fitst--Selling electricity is preferred;

1.1.3. SFC SellEn--Self-Comsume mode Anti Reverse DISABLE

1.1.4. SFC Selldis--Self-Comsume mode Anti Reverse ENABLE

1.2 高级控制:

1.2.1、电网充电使能; (全局)

1.2.2、使用时间控制; (TOU 使能后, 时间段控制才生效)

1.2.3、仅光伏充电; (使能后, 只有光伏会给电池充电, 无论市电充电使能与否, 市电都不会给电池充电)

1.2 Advanced control:

1.2.1. Enable power grid charging; (global)

1.2.2. Use time control; (Time range control takes effect only after TOU is enabled.)

1.2.3. Only photovoltaic charging; (After enabling, only photovoltaic will charge the battery, whether the mains charging is enabled or not, the mains will not charge the battery)

1.3 TOU 设置:

1.3.1、设置的功率是电池充、放电的功率, 实际 SOC 大于设置 SOC 为放电功率, 小于设置 SOC 为充电功率;

1.3.2、运行中电池 SOC 小于设置的 SOC 时, 市电会给电池充电, 相当于跑电池优先模式; 电池 SOC 大于设置的 SOC 时, 电池放电, 如果光伏充足, 光伏也会给电池充电, 相当于跑自发自用模式;

1.3.3、TOU 设置里的电网充电使能为局部使能, 全局使能未打开时, 局部使能也无效;

1.3.4、当逆变器工作时间段处于 TOU 设置的时间段外, 电池不放电, 只光伏充电, 光伏不够供应负载, 会取电网的电供应负载, 建议按需求设置时间段;

1.3 TOU Settings:

1.3.1.The set power is the battery charge and discharge power, actual SOC greater than the set SOC is the discharge power of the battery , and less than the set SOC is the charge power of the battery;;

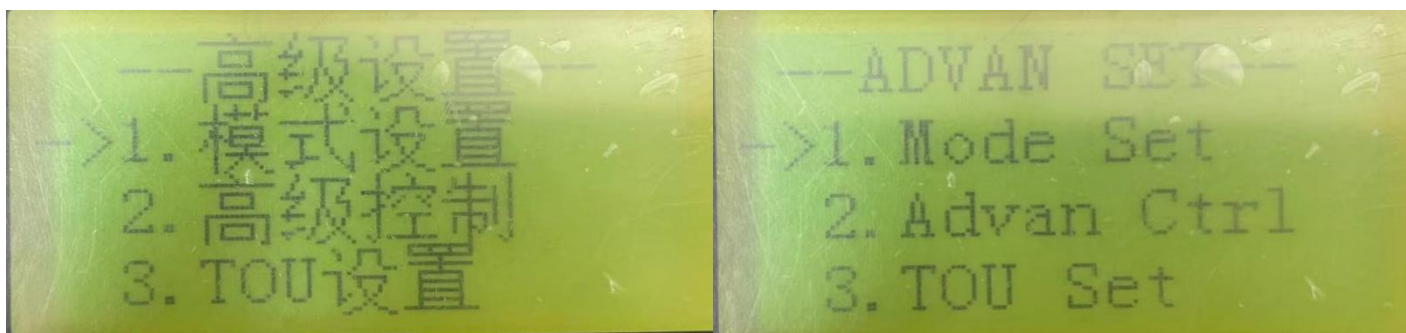
1.3.2. When the battery SOC in operation is smaller than the set SOC, the GRID will charge the battery, which is equivalent to running the battery priority mode. When the battery SOC is greater than the set SOC, the battery discharges, and if the photovoltaic is sufficient, the photovoltaic will also charge the battery, which is equivalent to running the self-Comsume mode

1.3.3. The power grid charging enable function in the TOU setting is enabled locally. If the global enable function is not enabled, the local enable function is invalid.

1.3.4. When the inverter working period is outside the time period set by TOU, the battery does not discharge, only the photovoltaic charging, the photovoltaic is not enough to supply the load, the grid will take the power supply load , it is recommended to set the time period according to the demand

2, 设置面页: 高级模式(固件版本不同, 以下内容有可能显示不同)

Setup page: Advanced mode(The following may be displayed differently depending on the different firmware version)



3, 设置面页: 模式选择

3.1, 禁止—禁用此功能;

3.2, 卖电优先--优先卖电给电网;

3.3, 自消耗卖电—自发自用模式, 可以送电到电网, 可在时间段内充电;

3.4, 自消耗防逆流—自发自用模式, 不可以送电到电网, 可在时间段内充电;

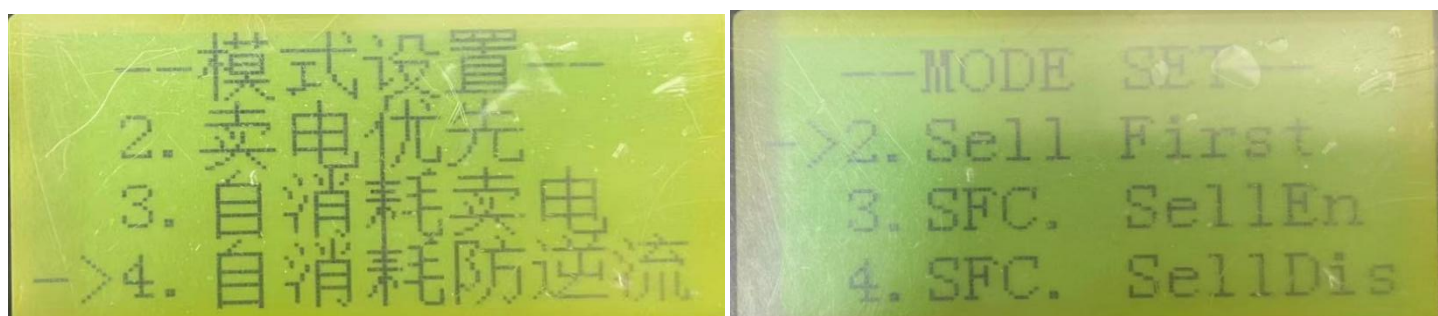
Setup page: Mode selection:

3.1. Disable - Do not use this function.

3.2. Sell First-- priority in selling electricity to the power grid;

3.3, SFC SellEn-- Self-Comsume mode, can be sent to the power grid, can be charged within a period of time;

3.4, SFC SellDis-- Self-Comsume mode, can not be sent to the grid, can be charged within a period of time;



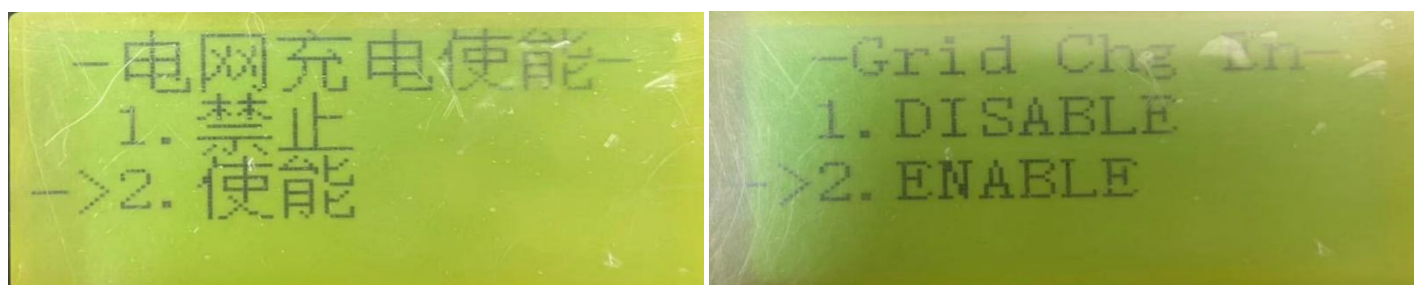
4, 设置面页: 高级控制, 使能设置:

Setup page: Advanced control, enable Settings:



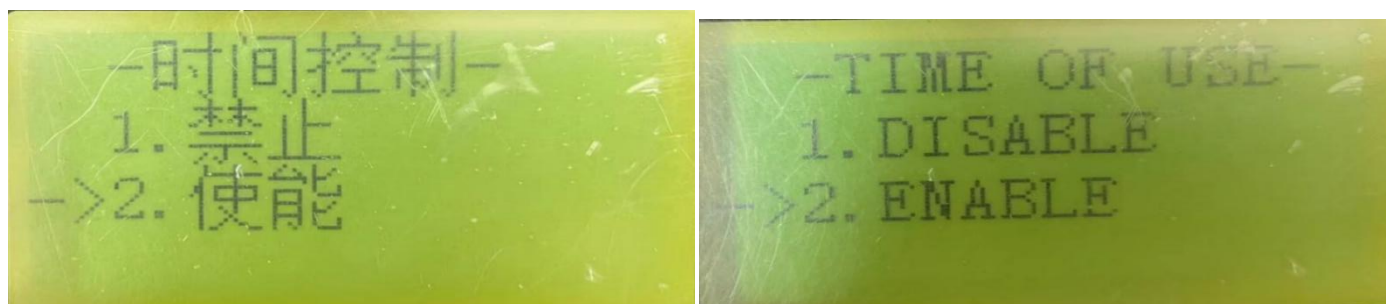
4.1, 设置面页: 电网充电使能设置--可以电网给电池充电, 选择使能 (4.3 仅光伏充电必须选择禁止), 不可以, 选择禁止 (4.3 仅光伏充电必须选择允许);

Setup page: Grid charging enable Settings-- you can select ENABLE for grid charge battery (4.3 only photovoltaic charge need to select DISABLE), you can select DISABLE for grid not charge battery (4.3 only photovoltaic charge need to select ENABLE);



4.2, 设置面页: 时间控制--按时间段设置给电池充电, 选择允许, 不按设置时间段充电, 选择禁止, 启用高级模式, 时间段需要设置;

Setup page: TIME OF USE - Charge the battery according to the slot, select ENABLE, do not charge according to the slot, select Disable, enable advanced mode, the time period needs to be set;



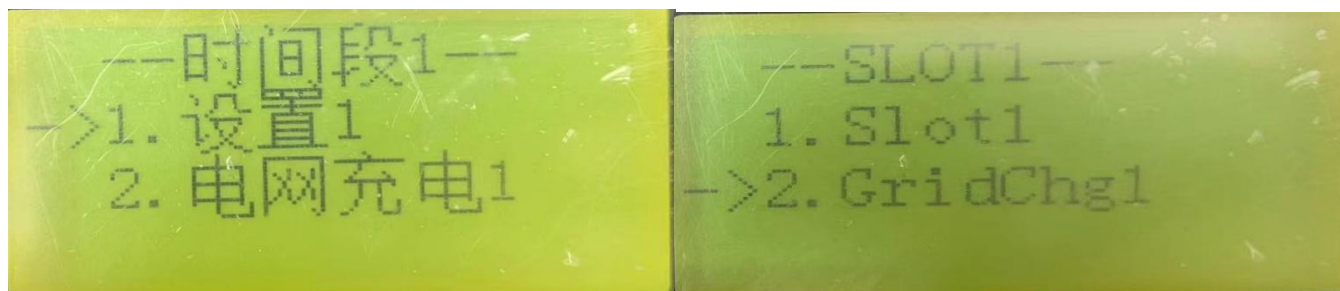
4.3, 设置面页: 仅光伏充电使能--仅使用光伏充电, 选择允许 (4.1 电网充电使能必须选择禁止), 允许电网参与充电, 选择禁止 (4.1 电网充电使能必须选择允许);

Setup page: only photovoltaic charging--Only use photovoltaic charging, select ENABLE (4.1 Grid charging enable need to select DISABLE), allow grid to participate in charging, select DISABLE(4.1 grid charging enable need to select ENABLE);



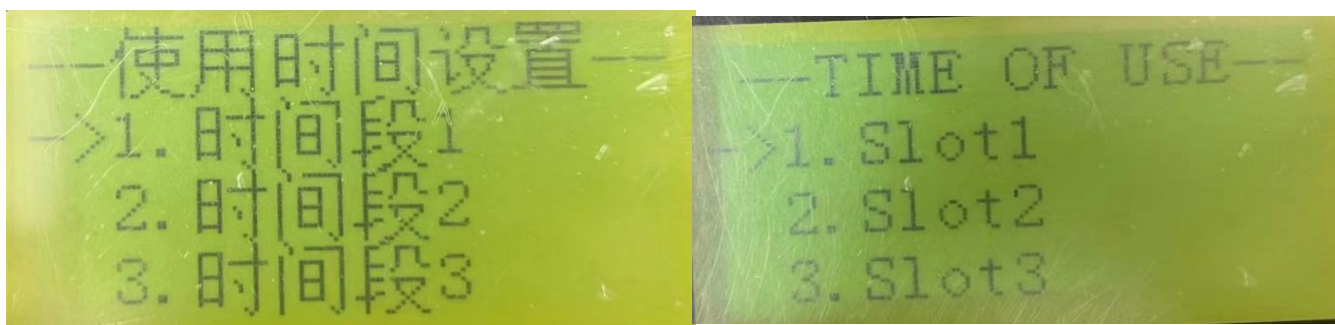
5, 设置面页: TOU 设置--时间段;

Setup page: TOU Set— SLOT;



5.1, 设置面页: 时间段设置--根据充电需求, 设置时间段, 可以设置 6 个时间段, 根据用电的不同需求, 尽量把一整天的时间都设置进去,

Setup page: TIME OF USE--Set the slot according to charging requirements, You can set six slot, According to the different needs of use electricity, set up the whole day as much as possible;



5.1.1, 设置面页: 时间段设置

5.1.1.1 开始--当前时间段开始的时间

5.1.1.2 结束--当前时间段结束的时间

5.1.1.3 功率--当前允许电池充电、放电功率,如果当前时间段是放电为主, 设置功率最好与逆变器额定功率一样,

5.1.1.4 SOC--当前允许电池充电、放电 SOC (运行中电池 SOC 小于设置的 SOC 时, 市电会给电池充电, 相当于跑电池优先模式; 电池 SOC 大于设置的 SOC 时, 电池放电, 如果光伏充足, 光伏也会给电池充电, 相当于跑自发自用模式);

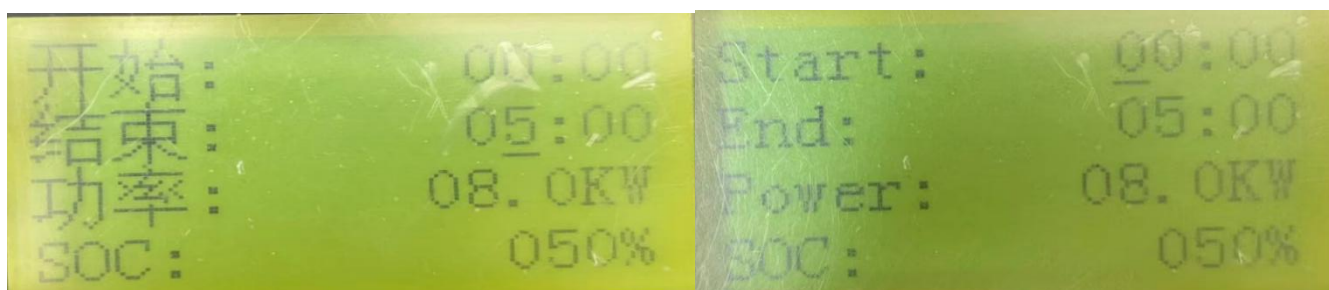
5.1.1 Setup page: Slot setting--

5.1.1.1 Start--The start time of the current slot

5.1.1.2 End--The end time of the current slot

5.1.1.3 Power--current allowable battery charging and discharging power,If the current slot is mainly discharge, the setting power is best as the inverter rated power.

5.1.1.4 SOC--current allowable charging and discharging SOC (When the battery SOC in operation is smaller than the set SOC, the GRID will charge the battery, which is equivalent to running the battery priority mode. When the battery SOC is greater than the set SOC, the battery discharges, and if the photovoltaic is sufficient, the photovoltaic will also charge the battery, which is equivalent to running the self-Comsume mode) ;



5.2, 设置面页: 充电使能--4.1 项, 选择允许, 电网可以给电池充电的情况下, 在当前时间段内电网给电池充电, 当前时间段内, 电网充电使能, 选择允许, 不使用电网充电, 选择禁止。

Setup page: Charging Enable--4.1, select ENABLE, the grid can charge the battery, in the current slot to charge the battery, the grid charging enable, select ENABLE, do not use the grid charging, select DISABLE.

